



1340

CENTER FOR CREATIVE & CONSCIOUS LEADERSHIP

The Ultimate Leadership Tune-Up
Personally Defined
Inside Out Ethos

1340.ORG



5 laws + 10 principles of creative & conscious leadership

Law of Connection

Scale up emotional and spiritual capital. Awareness of true self.

Law of Growth

Release the inner shadows. Process unresolved issues getting in your way.

Law of Purpose

Align with authentic purpose. Stay present to what has heart and fire.

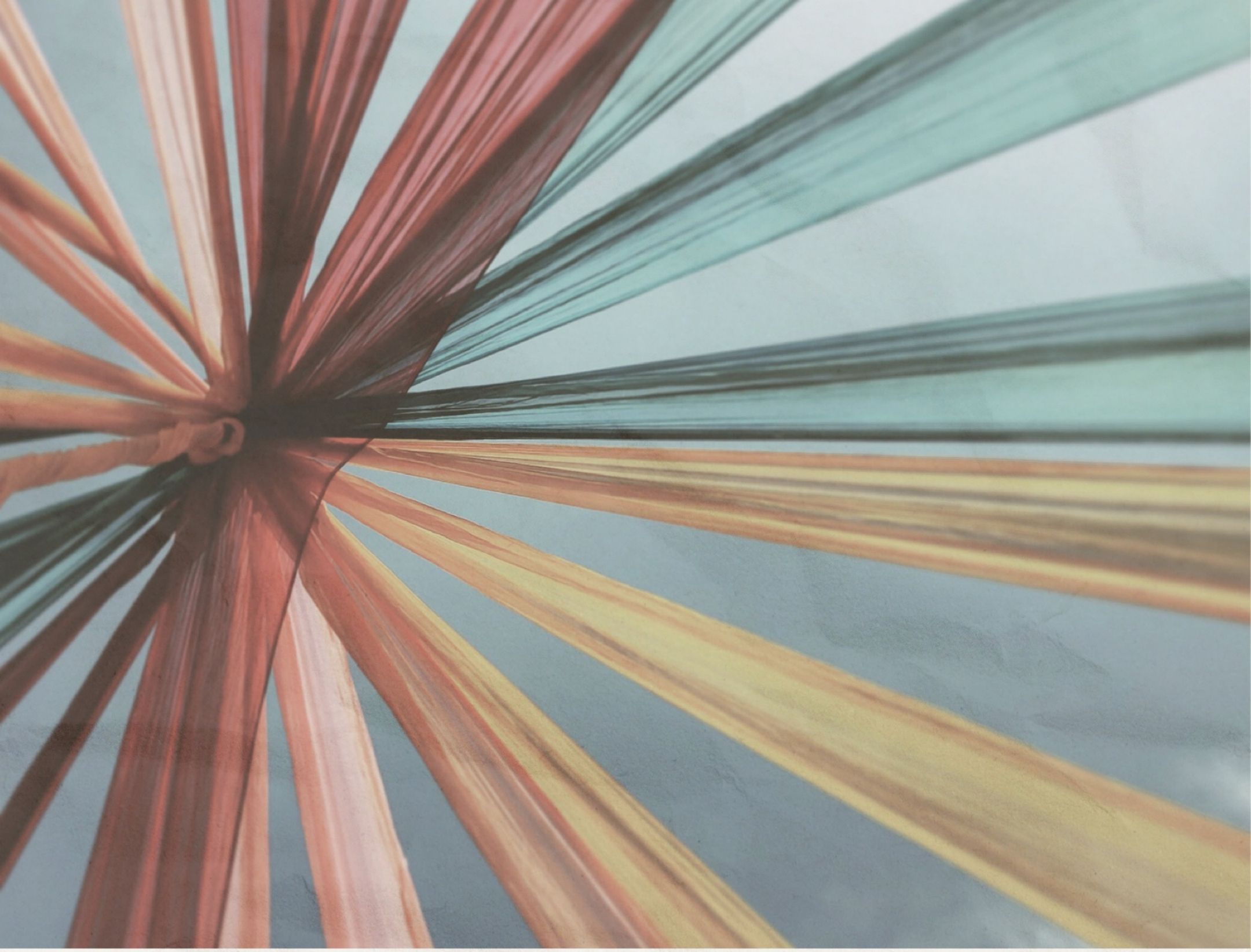
Law of Creation

Awaken your creative brain. Access your imagination.

Law of Change

Lead high quotient change. Inner change represents outer change.

1340.ORG



LAW OF CONNECTION

being in authenticity.

CREATIVE & CONSCIOUS LEADERSHIP PRINCIPLE #1

Genuine ability to show up as true self without any masks, own origin story and who you are with confidence including imperfections, live life according to values, vision, and goals versus pleasing external societal pressures, words and actions align, have emotional self-awareness and regulation, and ability to cut through pretense and get to the heart of connection.

1340.ORG



LAW OF CONNECTION

above the line leadership.

CREATIVE & CONSCIOUS LEADERSHIP PRINCIPLE # 2

Radical self-awareness with conscious mindset, ability to rise above the noise to stay at personal best while under stress, can access emotional and spiritual intelligence beyond the ego's narrative, leads with creative thinking and empathy, takes responsibility when below the line and understands how to reset to move into a conscious state of being.

1340.ORG



LAW OF GROWTH

completing
unfinished business.

CREATIVE & CONSCIOUS LEADERSHIP PRINCIPLE # 3

When our shadows, unresolved issues, and unprocessed emotions get in the way of being effective and hold us back. Courage to *look again* and not rearrange the external world for answers, but know the answers reside from within. Conscious awareness of patterns, conflicts, limiting beliefs, wounds, and behaviors that can keep us trapped in a cycle of suffering and conditioned limitation that creates separation from true self.

1340.ORG



LAW OF GROWTH

applied empathy.

CREATIVE & CONSCIOUS LEADERSHIP PRINCIPLE # 4

Recognize how judgments of self, with others, and false narratives can take a toll on well-being and relationships. Through self-forgiveness and self-compassion, a universal application of letting things go, we gain inner freedom and liberation. When we realize we are not our thoughts or emotions, we can elevate to a conscious level of applied empathy, where the ego's grip to being right, positionality, and duality can be quieted.

1340.ORG



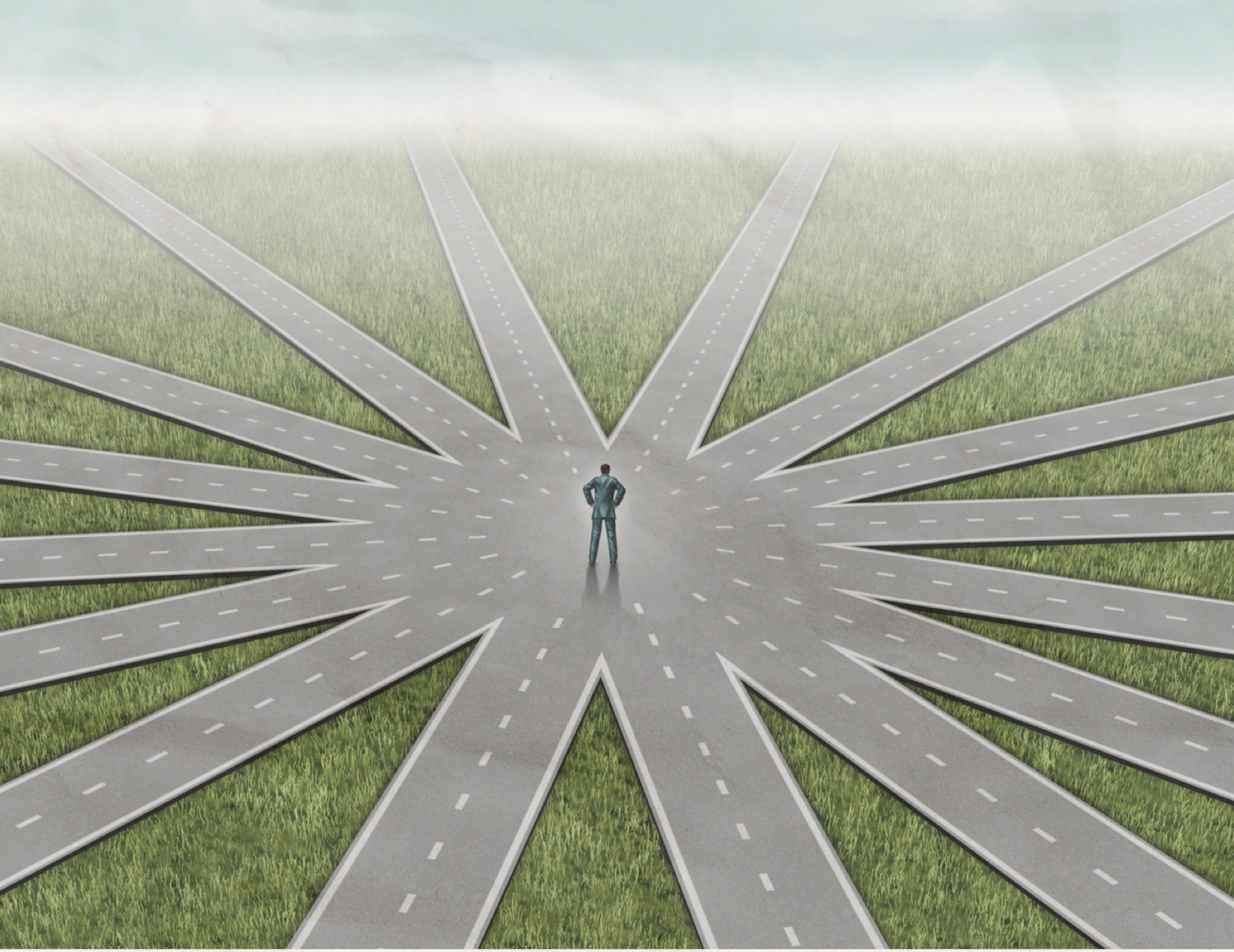
LAW OF PURPOSE

power of the heart.

CREATIVE & CONSCIOUS LEADERSHIP PRINCIPLE # 5

When purpose meets passion in life it can ignite a firestorm. Being in touch with the chambers of our heart awakens us into infinite possibilities as we align our gifts with what has meaning and fire. The sacred power of knowing what we are called forth into doing requires truth telling, accessing intuition, and vision to cultivate purpose and life dreams. Feeding the higher version of self creates a magnetic force bringing our voice and power into the world.

1340.ORG



LAW OF PURPOSE

recognize

unconscious commitments.

CREATIVE & CONSCIOUS LEADERSHIP PRINCIPLE # 6

Our attachments and addictions to false identities and ways of being can prevent us from realizing our goals. Hidden unconscious commitments stand in the way of conscious commitments and act as competing priorities that impact relationships, decisions, and can conflict with intended outcomes and dreams. Being unconsciously committed to feeling comfortable is to avoid being uncomfortable, where choices are followed by consequences.

1340.ORG



LAW OF CREATION

unleash

your creative scientist

CREATIVE & CONSCIOUS LEADERSHIP PRINCIPLE # 7

The ability to access our inner creative agency provokes imagination and possibility. Life as a creative journey, personally defined, is a kaleidoscope of creative solutions, divergent paths, and unique ideas. Accessing the creative brain is one of the most competitive capabilities in today's disrupted world with an ability to cultivate unconventional methods, pattern interrupt, empathetic expansion, and innovative outcomes.

1340.ORG



LAW OF CREATION

loyalty to your true self.

CREATIVE & CONSCIOUS LEADERSHIP PRINCIPLE # 8

Awakening into who we are on a conscious level provokes a choice of honoring our higher self or abandoning who we were meant to be. Walking a familiar path and identity can keep us anchored in a comfort zone, where some roots and chains hold us back. Shedding what no longer serves us requires brave and conscious evolution. Loyalty to your true self is a sense of magic and transformation always waiting to be claimed.

1340.ORG



LAW OF CHANGE

transcending limiting

interpretations of reality.

CREATIVE & CONSCIOUS LEADERSHIP PRINCIPLE # 9

A false conclusion or a misidentification with how we see ourselves or the situation can easily surface. Unconscious filters can become a response pattern that alters our reality due to being anchored in a habitual mindset and internalized matrix that limits our perception of the truth. Radical awareness allows us to transcend conditioned behaviors and move into cultivating change from the inside out to achieve a new reality and outcome.

1340.ORG



LAW OF CHANGE

a selfless leader.

CREATIVE & CONSCIOUS LEADERSHIP PRINCIPLE #10

As we awaken into the heartstrings that pull us forward into our life's work, and the ego's narrative has been tamed by the authentic truth, a new level of consciousness becomes illuminated. There is an ability to pursue service over self-interest through the expansion of acceptance, self-love, and honoring one's original medicine. Our inner attunement and truth are revealed with a sense of liberation as we become a changemaker and contributor for the common good from the inside out.

1340.ORG